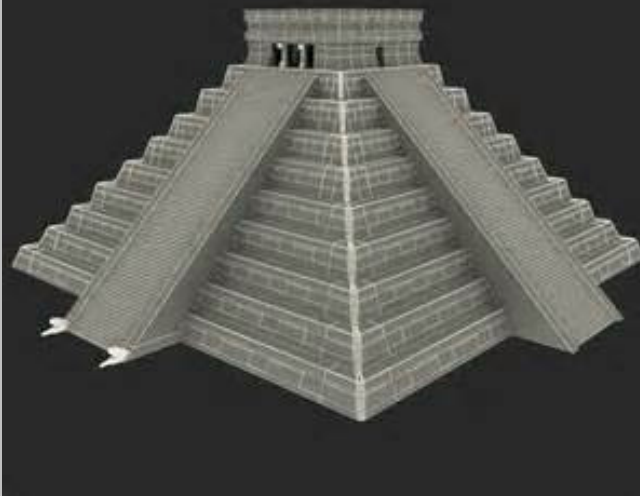


# *The Captain Morgan Mystery*



**Preview**



Find out  
who killed  
treasure  
hunter  
Barry Gold  
before he  
could find  
the lost  
gold of  
Henry  
Morgan.

Written and developed by

**Jack Pachuta**

**Mysteries on the Net**  
Management Strategies, Inc.

PO Box 191

Cedarburg, WI 53012

262/377-7230

[jack@pachuta.com](mailto:jack@pachuta.com)

[www.mysteries-on-the-net.com](http://www.mysteries-on-the-net.com)

Copyright, 2015. All rights reserved.

## The Captain Morgan Mystery

### How to Organize Your Murder Mystery

**Thanks for purchasing the Captain Morgan murder mystery. You and your guests will enjoy the challenge of solving a crime that will test everyone's powers of deduction.**

*The Captain Morgan Mystery* was coordinated for a Murder Mystery Cruise to Central America. It was conducted over a six-day period aboard a luxury cruise ship. The format has been modified for an evening's entertainment, however it can easily be orchestrated over a longer period of time.

The "set" for your mystery event is a resort near San Pedro on Ambergris Caye, Belize. *The case incorporates real facts and locations, but tweaks them to provide a thought-provoking plot.*

Here is what you should do to coordinate your murder mystery:

**STEP 1: Review the materials in this kit.** But . . . please do it in a very specific way. Remember - you have ALL of the information, *including the solution to the mystery*. If you decide to participate in the mystery as a suspect or as an investigator, you'll want to keep yourself in the dark about WHO DONE IT.

The entire kit includes:

- **Instructions on how to organize the event.** You're reading them right now. The page numbers in this kit are subdued in the upper right-hand corners so that you can reproduce the material effectively.
- **Instructions for the Chief Inspector who will facilitate the event.** Information for the person who will take charge of the murder investigation is on [page 6](#).
- **Invitation.** The invitation on [pages 7 and 8](#) serves as an introduction to the mystery and contains key information about the case. The two pages of the invitation are designed to be reproduced back to back, then folded with the bottom third of the invitation up and the top third down. You may want to use better quality stationery when you run off one copy for each guest, or you can take it to a professional print shop for reproduction. *Fill in the bottom flap with the details about your murder mystery.*
- **Guest List and "What to do . . ."** The List and the instructions on [pages 9 and 10](#) are designed three-up as a two-sided document that fits on one-third of a standard sheet of paper. You may want to use heavier stock when reproducing them. Run off one copy for each guest.
- **Nametags.** The nametags on [pages 11 through 13](#) can be reproduced on standard templates that are laid out with 10 nametags per page. Included is a blank sheet of nametags so that you can have more than 16 people at your mystery event. *At your discretion, you can add information to the nametags, or simply not use them at all.*
- **YIPPEE News.** The simulated printout of an Internet news page on [page 14](#) will be given to the guests upon arrival at the mystery event.
- **Map of Belize.** The map on [page 15](#) can be given to the guests, OR it can be posted at a central location.
- **Suspect Roles.** The 15 roles on [pages 16 through 25](#) contain the information you'll send with the invitations. Each role has the number "1" in a box in the upper left-hand corner. The roles are designed as two-sided documents that fit on one-third of a standard sheet of paper, similar to the Guest List. Again, you may want to use heavier stock when reproducing the roles. *Each role player*

## The Captain Morgan Mystery

gets only the information that applies to the role that he or she is playing. Your role players should know *ONLY* about themselves.

- **Non-Suspect Role Cards.** On [page 26](#), you'll find cards that you'll send to the guests who don't have roles as suspects. The cards are laid out three-up and should be run off on the same stock that is used for the Suspect Roles.
- **Role Cards #2.** On [pages 27 through 36](#), you'll find the second role cards containing more information about each suspect. They have the number "2" in their upper left-hand corners and are laid out in a similar fashion to the Suspect Roles.
- **Role Cards #3.** On [pages 37 through 46](#), you'll find the third role cards containing even more information about each suspect. They have the number "3" in their upper left-hand corners. Run them off in the same way you ran off the previous cards.
- **Role Card Inclusions.** The graphics on [page 47](#) are clues that will be given to specific suspects along with Role Cards #2 and #3. Run off the page and separate the graphics. You may want to reproduce the page on heavier stock.
- **Treasure Maps.** On [page 48](#), you'll find a key for preparing the map on [page 49](#). The plot for the mystery involves a treasure map drawn by Henry Morgan that was torn into four pieces. During your investigation, the pieces will be included in Role Cards #2 and #3 given to specific suspects. Use page 47 as a guideline for "ripping up" the map on page 48. Since it was supposedly drawn in the 17th century, you'll want to use parchment stock when reproducing the map. You'll also need extra copies of page 48 to hand out to your guests. *You may need to trim the copies.*
- **Emails from I. Elways Gettum.** The emails on [pages 50 and 51](#) will be read by the Chief Inspector to the guests at specific points during the investigation. You can either make a copy for each person, or you can post them at a central location so that everyone can read them.
- **The Answer Sheet.** Each guest or team of guests will complete the Answer Sheet on [page 52](#) to solve the case.
- **The Denouement.** *This is the solution to the case.* The Chief Inspector will read [pages 53 through 58](#) at the end of the mystery. If you are trying to solve the case, run off the solution without looking at it and place it in a sealed envelope.

**STEP 2: Plan your event.** Pick a date on which to conduct the murder mystery event. It will take two-and-a-half to three hours to solve the case using the recommended format. Because of this, a buffet meal is suggested for the mystery event. If you have a sit-down meal, add the amount of time the meal will take to your planning time. *Remember: our mysteries are for serious sleuths.*

**STEP 3: Match your guests with the Suspect Roles.** Review the scenario in the invitation and the brief descriptions of the suspects on the Guest List. *The mystery has eight female suspects and seven male suspects.* Select individuals who would fit into these roles. *If you will be attempting to solve the case along with your guests, don't read everything in this kit. If you do, you'll know too much about the case.*

Each Suspect Role contains the following:

1. **Information about yourself.**
2. **Why you are at the resort.**
3. **Your hometown.**
4. **Family.**
5. **Additional facts you should know and reveal at your discretion.**
6. **Others you know something about.**
7. **What you know about Barry Gold.**

## *The Captain Morgan Mystery*

Run off the 15 Suspect Roles on pages 16 through 25. They are laid out two-sided and three-up.

**STEP 4: Invite your guests.** Approximately three to four weeks before the murder mystery, send out the invitations with the roles. Each guest should receive a personal invitation. Your guests should bring their roles with them and use them as reference material when they are being questioned by the other guests. Be sure to make extra copies of the roles in case someone forgets to bring his or her Suspect Role.

*If you have more than 15 guests, include the card on page 26 in the invitations of the non-suspect guests. Assign them the identities of fictional sleuths such as Columbo, Miss Marple or Sherlock Holmes.*

**STEP 5: Select a Chief Inspector to facilitate the investigation.** The Chief Inspector should read the Instructions on page 6, and review the information in this kit to keep the event moving and ensure that the investigation is conducted effectively.

**Here's what to do on the night of the mystery event.**

**STEP 6: The Chief Inspector greets the guests.** The Chief Inspector gives each guest a copy of the Guest List, tells them to find the correct nametags and to follow the instructions on the back of the Guest List labeled "What to do . . ." The map of Belize on page 15 can either be given to the guests, OR it can be posted at a central location where everyone can see it.

*Give your guests approximately 20-30 minutes to meet the other guests and to share the information about their roles. You may adjust this timeframe based upon the logistics of your event and the arrival times of your guests.*

**STEP 7: Read the news account from YIPPEE News.** The Chief Inspector quiets the guests and reads the account in YIPPEE News reporting the death of Barry Gold. He or she then says that the Belizian State Police have assigned him or her to the case and that one of the guests is a murderer. Distribute copies of the YIPPEE News to the guests OR make copies available at a central location. The Chief Inspector then states that additional information will be arriving throughout the investigation as facts are uncovered.

**STEP 8: The investigation starts.** After the report is read, your guests should continue to learn more about the other guests. *They can, if they so desire, form teams to try to solve the case.* Allow this to go on until the momentum builds. You can adjust the timing based upon your group. At first, people will seem overwhelmed by the facts, but soon specific storylines will start to emerge. **At your discretion, you can supply note-taking material.**

**STEP 9: Break for dinner or refreshments.** The guests may continue to exchange information while they are eating.

**STEP 10: Distribute Role Cards #2.** The cards with the number "2" in the upper left-hand corners are given to the guests. You can, at your discretion, design envelopes in which to place the roles.

**VERY IMPORTANT:** *Be sure to include segments "1" and "2" of the treasure map with the Role Cards that you give to Dirk Room and Carl Counter. AND, include the appropriate graphics from page 47 with the Role Cards of Ima Arteest and Andy Awpook.*

## *The Captain Morgan Mystery*

**STEP 11: Read Email “1” from I. Elways Gettum.** Approximately 10 minutes later, the Chief Inspector reads aloud the email and makes copies available to the guests.

**STEP 12: Distribute Role Cards #3.** The cards with the number “3” in the upper left-hand corners are given to the guests.

**VERY IMPORTANT:** *Be sure to include segment “3” of the treasure map with the Role Card that you give to Lady Lizbeth Wight. AND, include the appropriate graphics from page 47 with the Role Cards of Dirk Room and Hardy Drive.*

**STEP 13: Read Email “2” from I. Elways Gettum.** Approximately 10 minutes later, the Chief Inspector reads aloud the email and makes copies available to the guests.

**STEP 14: Reveal Segment “4” of the Treasure Map.** The Chief Inspector shows map segment “4” to the guests, saying that the staff in the resort’s laundry found the segment in the bed clothes from Barry Gold’s room. All four segments of the map are placed on a table or flat surface for everyone to examine.

**STEP 15: Distribute complete Treasure Maps.** After the guests have examined the segments for a few minutes, the Chief Inspector says that the police lab has used its skills in documentation to speculate what the entire map would have looked like. Copies of the complete treasure map on page 49 are made available to the guests.

**STEP 16: Guests work with the Maps.** Let the guests attempt to figure out the meaning of the map for 10 to 15 minutes.

**STEP 17: Distribute the Answer Sheets.** Give the guests five to seven minutes to write out their solutions to the case by answering the questions on the *Answer Sheet*.

**STEP 18: Guests give their solutions.** The Chief Inspector asks the questions on the Answer Sheet to each guest or team of guests, one at a time. The guests read the answers exactly as they were written on the Answer Sheet. *NOTE: Often, a guest will want to change his or her mind after hearing the answers from other guests. Don’t let this happen.*

**STEP 19: Read “The Denouement.”** The Chief Inspector opens the envelope in which the solution was placed, and reads it aloud to the guests. This will take around eight minutes. He or she will need a copy of the complete Treasure Map which is explained during the Denouement.

**STEP 20: Award prizes.** At your discretion, award prizes to the person or investigative team that did the best job of solving the case.



## *Instructions for the person who will facilitate the event*

**If you are a suspect**, then you already have a formal part in the investigation. Your role as facilitator means you will have to stay in character while ensuring that the investigation is conducted effectively.

**If you are not one of the suspects**, you can assume the role of the Chief Inspector assigned by the Belizian State Police to the case. You can, at your discretion, give yourself a name that is consistent with the theme of the mystery.

Here's what you should do:

1. Review all of the information in this packet so that you are familiar with the mystery. **REMEMBER: If you are attempting to solve the crime, do NOT read "The Denouement" in advance. It contains the solution to the case.**
2. As the guests arrive, hand them a copy of The Guest List and have them read the instructions headlined, "What to do . . ." Tell them to talk with as many people as they can to acquire information.
3. Keep the event moving by following the instructions on **pages 2 through 5**. Make sure all information is given and distributed at the right intervals. **IMPORTANT: the timing of the steps can be adjusted based upon the logistics and the size of your group.**
4. **If you are not one of the suspects**, after you read "The Denouement," lead the guilty party away to jail. If you want to, you can use toy handcuffs to make the arrest. If you stage the arrest in this way, let the guests know you will be doing this.
5. Take a bow for a job well done!

Be sure to read the letter from I. Elways Gettum inside!

*for an event filled with Intrigue and Adventure*

# Grand Iguana Resort near San Pedro, Belize

Join us at the

## *Murder Mystery Party*



Copyright, 2015

### *Mysteries on the Net*

PO Box 191, Cedarburg, WI 53012, [www.mysteries-on-the-net.com](http://www.mysteries-on-the-net.com), (262)377-7230



RSVP to \_\_\_\_\_

The resort is located at \_\_\_\_\_

Be sure to check in by \_\_\_\_\_

Your room will be ready on \_\_\_\_\_



## *Your Reservation at the Grand Iguana Resort*

# INTERJUST



INTERNATIONAL  
JUSTICE ORGANIZATION

## Confidential Memo

Dear Guest;

It has come to our attention that you are booked at the Grand Iguana Resort near San Pedro, Belize. Be advised that someone with whom you are familiar, **Barry Gold**, will also be staying at the resort. As you know, Gold is a treasure hunter who has a checkered record with law enforcement officials around the globe.

Likewise, be informed that Gold is under surveillance and is rumored to possess a segment of a treasure map drawn by none other than Captain Henry Morgan, the infamous pirate and privateer. Although Interjust is certain that Gold is profiting from dealing in precious metals and illegal contraband, we have never been able to pin anything on him.

You should also be aware that we've discovered Gold is determined to find the rest of the map and procure a treasure that could be worth millions. Keep an eye on his movements and report any suspicious activity to the authorities.

Your cooperation in bringing him to justice will be greatly appreciated.

Regards,

*I. Elways Gettum*

Division Chief

### *Your Role*

To remind you of your **true identity**, refer to the details in the enclosed information. *Study the facts carefully and bring the document with you.*

Some of the other guests may want to know more about you, and we'd hate to think that you'd be at a loss for words. They might think you look like you're guilty of something!





## Guest list

**Ima Arteest**—Artist  
**Andy Awpook**—Philanthropist  
**Devin Bell**—Oceanographer  
**Barbra Burnette**—Entertainer  
**Carl Counter**—Gambler  
**Hardy Drive**—Computer Expert  
**Nona Faktz**—Historian  
**Justine Forall**—Federal Prosecutor  
**Manny Payton**—Soccer Coach  
**Dirk Room**—Photographer  
**Flora Seeker**—Botanist  
**Hiram Seez**—Retired Rear Admiral  
**Ada Tastee Spice**—Cookbook Author  
**Pearl T out**—Champion Embroiderer  
**Lady Lizbeth Wight**—British Socialite

## Guest list

**Ima Arteest**—Artist  
**Andy Awpook**—Philanthropist  
**Devin Bell**—Oceanographer  
**Barbra Burnette**—Entertainer  
**Carl Counter**—Gambler  
**Hardy Drive**—Computer Expert  
**Nona Faktz**—Historian  
**Justine Forall**—Federal Prosecutor  
**Manny Payton**—Soccer Coach  
**Dirk Room**—Photographer  
**Flora Seeker**—Botanist  
**Hiram Seez**—Retired Rear Admiral  
**Ada Tastee Spice**—Cookbook Author  
**Pearl T out**—Champion Embroiderer  
**Lady Lizbeth Wight**—British Socialite

## Guest list

**Ima Arteest**—Artist  
**Andy Awpook**—Philanthropist  
**Devin Bell**—Oceanographer  
**Barbra Burnette**—Entertainer  
**Carl Counter**—Gambler  
**Hardy Drive**—Computer Expert  
**Nona Faktz**—Historian  
**Justine Forall**—Federal Prosecutor  
**Manny Payton**—Soccer Coach  
**Dirk Room**—Photographer  
**Flora Seeker**—Botanist  
**Hiram Seez**—Retired Rear Admiral  
**Ada Tastee Spice**—Cookbook Author  
**Pearl T out**—Champion Embroiderer  
**Lady Lizbeth Wight**—British Socialite

## What to do . . .

- **Your goal is to solve the case.** To do this, you'll need to focus on three things: MOTIVE, MEANS and OPPORTUNITY.
  - **Introduce yourself** to the other guests. Find out as much as you can about who they are and what they know.
  - **Develop a strategy.** Figure out how you will investigate the case.
  - **You may talk with ANYONE.** It's up to you to determine how much or how little of what you know to share with the other guests.
  - **If you like, you may team up with several of the other guests.** Determine how you want to work to solve the case.
  - **The person or team that provides the most comprehensive solution** to the case will receive the everlasting kudos of fellow guests.
- AS IS ALWAYS THE CASE IN LIFE,** some people will be exaggerating or not telling the entire truth.

As the investigation progresses, more information about the case will emerge. You might even find that you have “forgotten” certain details or conveniently withheld important facts.

**Good luck and have a sleuthful event!**

## What to do . . .

- **Your goal is to solve the case.** To do this, you'll need to focus on three things: MOTIVE, MEANS and OPPORTUNITY.
  - **Introduce yourself** to the other guests. Find out as much as you can about who they are and what they know.
  - **Develop a strategy.** Figure out how you will investigate the case.
  - **You may talk with ANYONE.** It's up to you to determine how much or how little of what you know to share with the other guests.
  - **If you like, you may team up with several of the other guests.** Determine how you want to work to solve the case.
  - **The person or team that provides the most comprehensive solution** to the case will receive the everlasting kudos of fellow guests.
- AS IS ALWAYS THE CASE IN LIFE,** some people will be exaggerating or not telling the entire truth.

As the investigation progresses, more information about the case will emerge. You might even find that you have “forgotten” certain details or conveniently withheld important facts.

**Good luck and have a sleuthful event!**

## What to do . . .

- **Your goal is to solve the case.** To do this, you'll need to focus on three things: MOTIVE, MEANS and OPPORTUNITY.
  - **Introduce yourself** to the other guests. Find out as much as you can about who they are and what they know.
  - **Develop a strategy.** Figure out how you will investigate the case.
  - **You may talk with ANYONE.** It's up to you to determine how much or how little of what you know to share with the other guests.
  - **If you like, you may team up with several of the other guests.** Determine how you want to work to solve the case.
  - **The person or team that provides the most comprehensive solution** to the case will receive the everlasting kudos of fellow guests.
- AS IS ALWAYS THE CASE IN LIFE,** some people will be exaggerating or not telling the entire truth.

As the investigation progresses, more information about the case will emerge. You might even find that you have “forgotten” certain details or conveniently withheld important facts.

**Good luck and have a sleuthful event!**

YippeeADS



**Meet new friends in Belize**

What better place to rendezvous with friends you've never met before than at a luxury resort on Ambergris Caye? In a few days, you'll feel like old friends when the plans you've made enrich your life.



**Jewelry still the best way to wealth**

The Central American Jewelry Exchange offers you a discrete avenue to buy and sell treasures that men have fought and died for since time began. Our selection of jewelry and precious works of art is second to none.



**Rent an English country estate for your next holiday**

Lord and Lady Brokenow of Wiltshire are offering their ancestral home for holiday rental. The estate is situated on secluded land that's been in the family since 1671.



**Purchase colorful Honduran designs**

Our award-winning fabrics feature native flowers, birds, frogs and butterflies. Just ask the members of the International Stitching Society about the beauty and quality of our designs.

## Body of famous treasure hunter found at Grand Iguana Resort

**San Pedro, Belize** - The body of Barry Gold, a vagabond treasure hunter whose adventures have been under surveillance by international government officials for years, was discovered this morning in his room at the Grand Iguana Resort on Ambergris Caye. Travel documents found in his belongings indicated that Gold had recently visited Mexico and Honduras.

Gold was found by a hotel maid who entered the room to prepare it for the next guest. Police questioned her, but have not released her statement and have requested she remain silent. The resort's guests reported seeing Gold in the hotel's piano bar last night, yelling out songs that he wanted to hear performed by the singer.

An unnamed source told reporters that Gold was under investigation for allegedly smuggling rare artifacts from Central America to accomplices in the United States where they were being illegally sold to collectors. The source also said that authorities had been trying to bring Gold to justice for years, but were never able to gather enough evidence to file charges that would stick.

Gold carried an American passport, but traveled extensively to various parts of the world, presumably in search of rare objects that he could turn into profit. True to his name, he wore an abundance of gold jewelry and it's been rumored that he was especially interested in Central America where Incan gold and precious Mayan objects were plundered by Spanish adventurers in the 16th, 17th, and 18th centuries. Many of the ships carrying the booty were sunk by pirates or privateers and have yet to be found. Numerous coral reefs present a challenge to anyone searching for the wreckage.

Officials haven't yet listed a cause of death and say the incident is under investigation. Reports will be issued to the media as new details surface.

(Compiled by Rotters News Agency)

Top Stories

**Protective custody at record high numbers**



**New medicinal plant found in remote jungle**



**Where are the missing Mayan treasures?**



**Cookbooks with unusual recipes make big bucks**



**Casinos ferret out professional cheaters**



**American soccer teams barnstorm in Latin America**



**Critics rave about Reanna Bernson mystery novels**



**Lifetime Magazine recognized for photojournalism**



**Recommended Story**



### Modern sea monster eats everything in its path

For the third time in less than a year, a modern sea monster that marine biologists have dubbed "The Vacuum of the Sea," has washed ashore in the Caribbean waters near Belize. The dubious title was given to the creature because it appears to suck in whatever objects lie in its way. "You'd be amazed at what we've found inside of them," emphasized biologist Annie Mull, "Things that had been lost for years have been found again."

**MORE**